

ANNUAL  
SUMMER MEETING AND  
FIELD DAY

---

North Carolina  
Guernsey  
Breeders  
Association

---

Quail Roost Farms  
Rougemont, N. C.

---

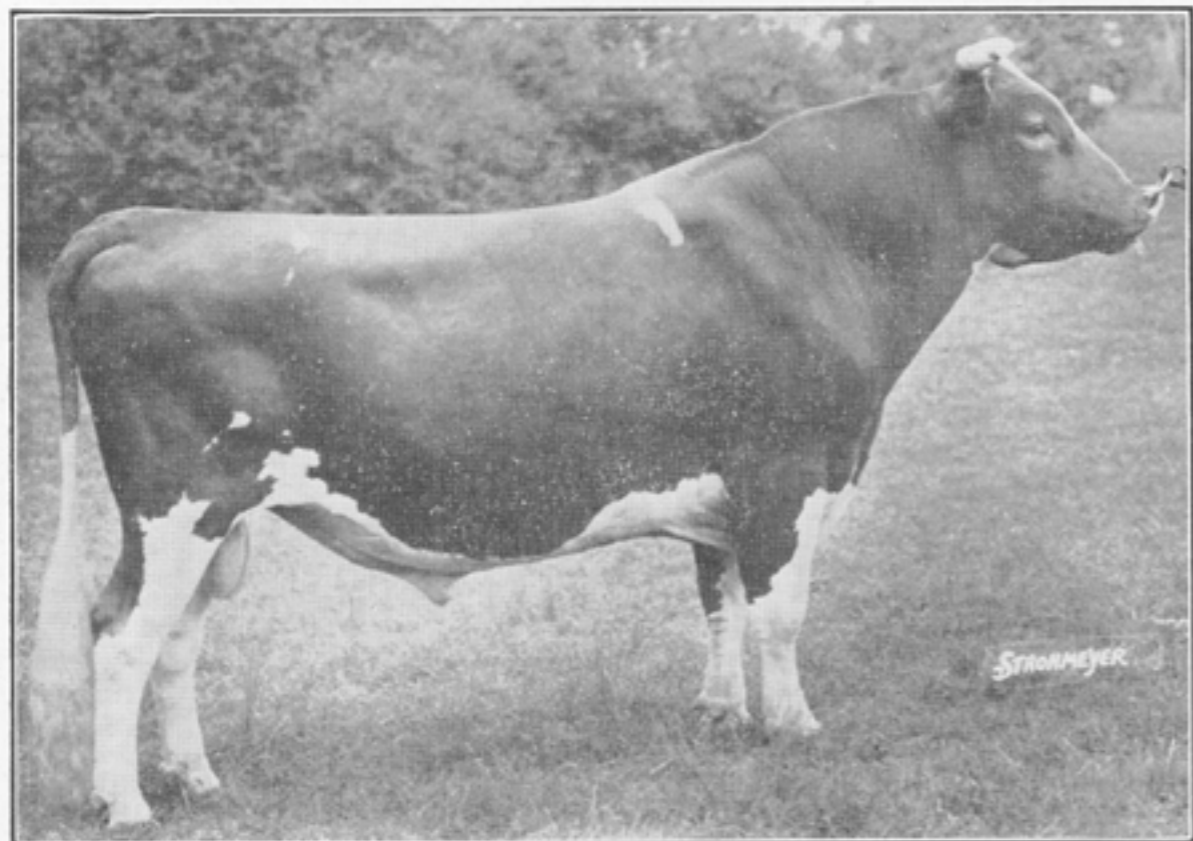
*Wednesday,  
June 1, 1938*

---

**PROGRAM**

- 10:30 A.M. Welcome . . . George Watts Hill  
Response . . . L. B. Compton, Pres.  
Address . . . Karl B. Musser, Secty.  
American Guernsey  
Cattle Club
- 12:00 NOON Business Meeting
- 12:30 P.M. Lunch
- 1:30 P.M. Cattle Show
- 

L. B. COMPTON, President  
DR. WM. MOORE, Secretary



## HIGH POINT PRINCE MAXIM 104016 A.R.

Born: June 1, 1924

Sire: Maxim of Linda Vista 42270 A. R.

Dam: Cavalier's Helen 65648 A. R.

Bred by Jules Breuchaud, Olivebridge, N. Y.

Sold December 1, 1925 to H. E. Boswell, Burkeville, Va.; September 26, 1930 to George Watts Hill.

"Prince Maxim" has 55 A. R. daughters; 6 A. R. sons. There are 8 daughters on test now (Class G.) and ten more in the herd that will be tested as they freshen. Of the completed records, five exceed 800 lbs. butterfat; ten exceed 700 lbs. Records now in the making should put him in the forefront of Guernsey bulls with 800 and 700 lb. daughters. He should have 70 or more A. R. Daughters.

The breeding policy at Quail Roost is based on concentration of the blood of Prince Maxim to retain the desirable characteristics of the progeny of this distinguished sire. We are using four sons; two double grandsons and two grandsons by outcross sires.

We appreciate the privilege of exhibiting the Prince Maxim family to the Guernsey fraternity:

### GROUP I

#### (Daughters of High Point Prince Maxim 104016 A. R.)

##### 1. ROSEBUD OF BURKEVILLE 232705

Born February 16, 1927.

10172.1-M. 554.4-F. Cl. G.

13853.7-M. 777.9-F. Cl. A.

Dam—Charity of Burkeville 165949 A. R.,  
8923.0-M. 468.8-F. Cl. E.

##### 2. MAXIM'S PATIENCE C 292535

Born August 8, 1929.

11021.0-M. 573.7-F. Cl. G.

On retest Cl. AA—11603.7-M. 533.7-F. 230 days.

Dam—Patience C 113490 A. R.,  
10995.6-M. 555.5-F. Cl. A.

##### 3. MAXIM'S DOROTHY 305918

Born November 22, 1929.

12492.8-M. 749.7-F. Cl. D.

Dam—Dorothy Gray of Goodvue 197630 A. R.,  
9425.5-M. 575.1-F. Cl. A.

##### 4. MAXIM'S FRANCINE 349830

Born June 18, 1931.

11668.9-M. 667.3-F. Cl. E.

On retest Class AA. 6912.6-M. 358.1-F. 142 days.

Dam—Beaux's Francine 251918 A. R.,  
10206.1-M. 518.6-F. Cl. D.

##### 5. QUAIL ROOST MAXIM'S MAY ROSE 363367

Born January 29, 1932.

11813.3-M. 708.3-F. Cl. F.

15227.4-M. 867.8-F. Cl. BB (8th place in BB)

Dam—Landmark Princess May Rose 183458 A. R.,  
14782.5-M. 863.5-F. Cl. A.

##### 6. QUAIL ROOST MAXIM'S CHARM 363367

Born February 27, 1932.

9264.2-M. 470.7-F. Cl. F.

On retest Cl. A. 4774.0-M. 207.6-F. 104 days.

Dam—Lady Luck of Cherokee 242601 A. R.,  
11030.6-M. 501.2-F. Cl. D.

##### 7. QUAIL ROOST MAXIM'S GOVERNESS 363368

Born March 8, 1932.

10702.3-M. 553.9-F. Cl. G.

Dam—Quail Roost Princess 302220 A. R.,  
11301.2-M. 600.0-F. Cl. G.

##### 8. QUAIL ROOST RUTH 363370

Born April 3, 1932.

11291.4-M. 620.0-F. Cl. F.

Dam—Massie's Rose of Quail Roost 248858 A. R.,  
13103.9-M. 713.7-F. Cl. A.

##### 9. QUAIL ROOST MAXIM'S MELVINA 374875

Born June 15, 1932.

8756.1-M. 537.5-F. Cl. FF.

Dam—Melvina of Curles Neck 76137 A. R.,  
12797.5-M. 626.5-F. Cl. A.

##### 10. QUAIL ROOST MAXIM'S LILY 374878

Born July 31, 1932.

9356.8-M. 509.1-F. Cl. F.

Dam—Lady Hester's Fern 201578 A. R.,  
9935.5-M. 473.9-F. Cl. F.

##### 11. QUAIL ROOST FASCINATION 374883

Born November 18, 1932.

10663.9-M. 590.4-F. Cl. F.

Dam—Cavalier's Fascination of Oakhurst 220408 A. R.,  
11244.2-M. 498.3-F. Cl. A.

##### 12. QUAIL ROOST MAXIM'S CHRISTINE 374884

Born November 24, 1932.

12855.4-M. 736.0-F. Cl. E.

12034.0-M. 660.8-F. Cl. CC.

Dam—Quail Roost Primrose Christine 289415 A. R.,  
12292.6-M. 599.1-F. Cl. G.

##### 13. QUAIL ROOST MAXIM'S DAUGHTER 376399

Born August 13, 1931.

11047.4-M. 554.5-F. Cl. FF.

14731.4-M. 690.9-F. Cl. AA.

Dam—Hilda's Foremost Daughter 289414 A. R.,  
11972.8-M. 592.9-F. Cl. D.

##### 14. QUAIL ROOST MAXIM'S LUXURY 396570

Born March 5, 1933.

10183.0-M. 500.6-F. Cl. G.

On retest Cl. B. 7515.0-M. 346.8-F. 190 days.

Dam—Oakhurst Foremost Lister 377117 A. R.,  
11144.1-M. 570.1-F. Cl. E.

##### 15. QUAIL ROOST BRIGHT EYES 408669

Born August 18, 1933.

10639.5-M. 602.1-F. Cl. F.

On retest Cl. C. 4031.7-M. 204.7-F. 106 days.

Dam—Quail Roost Bright Star 265781 A. R.,  
8512.0-M. 548.2-F. Cl. F.

##### 16. QUAIL ROOST MAXIM'S CONTENT 408667

Born September 17, 1933.

9442.1-M. 472.4-F. Cl. G. On retest Cl. A.

Dam—Wiona of Oak Ridge Farm 163749 A. R.,  
12056.5-M. 563.9-F. Cl. A.

##### 17. QUAIL ROOST MAXIM'S JESSIE 408683

Born February 24, 1934.

10138.9-M. 545.2-F. Cl. G.

Dam—Quail Roost Jessie 282578 A. R.,  
9793.0-M. 519.7-F. Cl. F.

5. **QUAIL ROOST MAXIM'S MAY ROSE 363367**  
Born January 29, 1932.  
11813.3-M. 708.3-F. Cl. F.  
15227.4-M. 867.8-F. Cl. BB (8th place in BB)  
Dam— Landmark Princess May Rose 183458 A. R.,  
14782.5-M. 863.5-F. Cl. A.
6. **QUAIL ROOST MAXIM'S CHARM 363367**  
Born February 27, 1932.  
9264.2-M. 470.7-F. Cl. F.  
On retest Cl. A. 4774.0-M. 207.6-F. 104 days.  
Dam— Lady Luck of Cherokee 242601 A. R.,  
11030.6-M. 501.2-F. Cl. D.
7. **QUAIL ROOST MAXIM'S GOVERNESS 363368**  
Born March 8, 1932.  
10702.3-M. 553.9-F. Cl. G.  
Dam— Quail Roost Princess 302220 A. R.,  
11301.2-M. 600.0-F. Cl. G.
8. **QUAIL ROOST RUTH 363370**  
Born April 3, 1932.  
11291.4-M. 620.0-F. Cl. F.  
Dam— Massie's Rose of Quail Roost 248858 A. R.,  
13103.9-M. 713.7-F. Cl. A.
9. **QUAIL ROOST MAXIM'S MELVINA 374875**  
Born June 15, 1932.  
8756.1-M. 537.5-F. Cl. FF.  
Dam— Melvina of Curles Neck 76137 A. R.,  
12797.5-M. 626.5-F. Cl. A.
10. **QUAIL ROOST MAXIM'S LILY 374878**  
Born July 31, 1932.  
9356.8-M. 509.1-F. Cl. F.  
Dam— Lady Hester's Fern 201578 A. R.,  
9935.5-M. 473.9-F. Cl. F.
11. **QUAIL ROOST FASCINATION 374883**  
Born November 18, 1932.  
10663.9-M. 590.4-F. Cl. F.  
Dam— Cavalier's Fascination of Oakhurst 220408 A. R.,  
11244.2-M. 498.3-F. Cl. A.
12. **QUAIL ROOST MAXIM'S CHRISTINE 374884**  
Born November 24, 1932.  
12855.4-M. 736.0-F. Cl. E.  
12034.0-M. 660.8-F. Cl. CC.  
Dam— Quail Roost Primrose Christine 289415 A. R.,  
12292.6-M. 599.1-F. Cl. G.
13. **QUAIL ROOST MAXIM'S DAUGHTER 376399**  
Born August 13, 1931.  
11047.4-M. 554.5-F. Cl. FF.  
14731.4-M. 690.9-F. Cl. AA.  
Dam— Hilda's Foremost Daughter 289414 A. R.,  
11972.8-M. 592.9-F. Cl. D.
14. **QUAIL ROOST MAXIM'S LUXURY 396570**  
Born March 5, 1933.  
10183.0-M. 500.6-F. Cl. G.  
On retest Cl. B. 7515.0-M. 346.8-F. 190 days.  
Dam— Oakhurst Foremost Lister 377117 A. R.,  
11144.1-M. 570.1-F. Cl. E.
15. **QUAIL ROOST BRIGHT EYES 408669**  
Born August 18, 1933.  
10639.5-M. 602.1-F. Cl. F.  
On retest Cl. C. 4031.7-M. 204.7-F. 106 days.  
Dam— Quail Roost Bright Star 265781 A. R.,  
8512.0-M. 548.2-F. Cl. F.
16. **QUAIL ROOST MAXIM'S CONTENT 408667**  
Born September 17, 1933.  
9442.1-M. 472.4-F. Cl. G. On retest Cl. A.  
Dam— Wiona of Oak Ridge Farm 163749 A. R.,  
12056.5-M. 563.9-F. Cl. A.
17. **QUAIL ROOST MAXIM'S JESSIE 408683**  
Born February 24, 1934.  
10138.9-M. 545.2-F. Cl. G.  
Dam— Quail Roost Jessie 282578 A. R.,  
9793.0-M. 519.7-F. Cl. F.
18. **QUAIL ROOST MAXIM'S MONA 408671**  
Born September 27, 1933.  
10083.2-M. 523.6-F. Cl. GG.  
On retest Cl. D-4008.6-M. 185.6-F. 85 days.  
Dam— Quail Roost Princess 302220 A. R.,  
11301.2-M. 600.0-F. Cl. G.
19. **QUAIL ROOST MAXIM'S ROSANNE 416654**  
Born June 25, 1934.  
10709.9-M. 528.1-F. Cl. G.  
On retest Cl. D-6012.2-M. 275.6-F. 131 days.  
Dam— Holliston's Oakhurst Rosanne 234016 A. R.,  
15863.8-M. 766.1-F. Cl. B.
20. **QUAIL ROOST MAXIM'S HATTIE 416662**  
Born August 14, 1934.  
10245.3-M. 568.6-F. Cl. GG.  
Dam— Wiona of Oak Ridge Farm 163749 A. R.,  
12056.5-M. 563.9-F. Cl. A.
21. **QUAIL ROOST MAXIM'S EMMA 416661**  
Born August 6, 1934.  
8040.5-M. 471.1-F. Cl. G.  
Dam— Emma's Lady Foremost 190936 A. R.,  
12325.0-M. 631.1-F. Cl. B.
22. **QUAIL ROOST MAXIM'S JANICE 426130**  
Born December 13, 1933.  
9524.1-M. 480.5-F. Cl. G.  
On retest in Cl. DD. 7621.2-M. 374.7-F. 222 days.  
Dam— Rose King's Jardiniere 306338 A. R.,  
12612.4-M. 602.5-F. Cl. F.
23. **QUAIL ROOST MAXIM'S ANN 449551**  
Born October 28, 1934.  
10512.7-M. 586.5-F. Cl. G.  
Dam— Quail Roost Ann Spotswood 291548 A. R.,  
13742.4-M. 686.6-F. Cl. F.
24. **QUAIL ROOST MAXIM'S EBONY 501576**  
Born January 1, 1935.  
10627.1-M. 533.8-F. Cl. G.  
Dam— Quail Roost Cavalier's Jewel 330602 A. R.,  
10356.4-M. 624.3-F. Cl. F.
25. **QUAIL ROOST MAXIM'S NATOLA 501579**  
Born March 14, 1935.  
9800.0-M. 503.2-F. Cl. G.  
Dam— Natola of Open Country 242598 A. R.,  
13492.7-M. 621.1-F. Cl. A.
26. **QUAIL ROOST MAXIM'S PET 514225**  
Born April 15, 1935.  
10192.8-M. 495.8-F. Cl. G.  
Dam— Easter Boy's & Dolly's Valentine 210152 A. R.,  
9115.0-M. 439.2-F. Cl. A.
27. **QUAIL ROOST MAXIM'S GEM 514726**  
Born April 20, 1935.  
11260.4-M. 612.4-F. Cl. G.  
Dam— Quail Roost Generous 330601 A. R.,  
12976.6-M. 659.2-F. Cl. CC.
28. **QUAIL ROOST MAXIM'S DARLING 519713**  
Born June 14, 1935.  
On test Cl. GG - 7058.6-M. 377.7-F. 296 days.  
Dam— Oakhurst Foremost Dimple 377116 A. R.,  
10105.2-M. 578.2-F. Cl. C.
29. **QUAIL ROOST MAXIM'S ANNETTE 548860**  
Born September 12, 1935  
Dam— Quail Roost Ann Spotswood 291548 A. R.,  
13742.4-M. 686.6-F. Cl. F.
30. **QUAIL ROOST MAXIM'S EM 534368**  
Born March 3, 1936.  
On A. R. test Cl. G - 3021.8-M. 137.6-F. 76 days.  
Dam— Emogene of Garden Creek 266444 A. R.,  
13499.9-M. 710.5-F. Cl. BB.
31. **QUAIL ROOST MAXIM'S DONNA 542787**  
Born May 29, 1935.  
On A. R. test Cl. G.  
Dam— Willomere Belle 310888 A. R.,  
12946.5-M. 585.1-F. Cl. AA.

32. **QUAIL ROOST MAXIM'S BEA**, (Tattoo B-54)  
Born August 3, 1936.  
Dam— Beechford's Beatrice 191200 A. R.,  
17396.2-M. 854.1-F. Cl. A.
33. **TATTOO B-55**—Born August 8, 1936.  
Dam— Maplewood Queen Marie 237046 A. R.,  
12497.1-M. 655.5-F. Cl. F.
34. **TATTOO B-69**—Born September 13, 1936.  
Dam— Quail Roost Bessie 432557 A. R.,  
12452.6-M. 664.2-F. Cl. FF.
35. **TATTOO C-7**—Born January 7, 1937.  
Dam— Beau's Rose of Invercroft 320749 A. R.,  
14389.6-M. 648.6-F. Cl. AA.
36. **TATTOO C-19**—Born February 20, 1937.  
Dam— Fellowship Sam's Charity 397318 A. R.,  
9684.0-M. 498.8-F. Cl. GG.
37. **TATTOO C-25**—Born March 2, 1937.  
Dam— Cabin Hill Hildred 405275 A. R.,  
11971.6-M. 618.9-F. Cl. GG.
38. **TATTOO C-27**—Born March 5, 1937.  
Dam— Quail Roost Country Flower 330600 A. R.,  
12587.3-M. 717.4-F. Cl. G.
39. **TATTOO C-34**—Born April 4, 1937.  
Dam— Oakhurst Foremost Dimple 377116 A. R.,  
10105.2-M. 578.2-F. Cl. C.
40. **TATTOO C-64**—Born July 13, 1937.  
Dam— Maplewood Queen Marie 237046 A. R.,  
12497.1-M. 655.5-F. Cl. F.

(Sons of Prince Maxim in Service at Quail Roost)

**GROUP II**

1. **MAXIM OF BURKEVILLE** 129366 A. R.  
8 A. R. Daughters — 9 on test
41. **FANCY'S FOLLY OF CONISTON HALL** 378260 A. R.  
10874.5-M. 624.3-F. Cl. E.
42. **MAXIM'S APPLE BLOSSOM** 367814 A. R.  
11238.1-M. 661.6-F. Cl. D.
43. **QUAIL ROOST PATIENT ROSE** 501574 A. R.  
9171.4-M. 518.4-F. Cl. G.
44. **QUAIL ROOST PATIENT CLAIRE** 534366  
Now on A. R. test Cl. G.
45. **QUAIL ROOST PATIENT FANCY** 534370  
Now on A. R. test Cl. G.

**GROUP III**

2. **QUAIL ROOST MAXIM'S PRINCE** 209991  
Born March 14, 1933.  
Dam— Landmark Princess May Rose 183458 A. R.,  
14782.5-M. 863.5-F. Cl. A.
- Daughters in Milk
46. **QUAIL ROOST PRINCESS BETTY** 519715—On test Cl. G.  
Has 8110.0-M. 375.8-F. in 263 days.
47. **QUAIL ROOST PRINCESS CAROL** 519716—On test Cl. G.  
Has 7321.8-M. 420.6-F. in 232 days.

**GROUP IV**

3. **QUAIL ROOST MAXIM KING** 215828  
Born February 18, 1934 (Full brother to Bull 2 - above)  
One daughter in milk
48. **QUAIL ROOST QUEEN CELESTE** 534362—On test Cl. G.  
Has 2069.1-M. 89.2-F. in 57 days.

**GROUP V**

4. **QUAIL ROOST MAXIM'S IDEAL** 256205  
Born January 10, 1937
49. Dam— Gerar Princess Ideal 337194 A. R.,  
14829.8-M. 780.7-F. Cl. A.  
Bred to 15 heifers.

(Grandsons of Prince Maxim in Service)

**GROUP VI**

5. **QUAIL ROOST ILLUSTRATOR** 215832  
Born April 15, 1934.  
Sire — Caumsett Taxpayer 145444 A. R.  
Dam— Maxim's Patience C 292535 A. R. (No. 2—Group I).
- Daughters—
50. Dam— **QUAIL ROOST MAXIM VIOLET** 519712  
Sold Virginia State Sale 1937 for \$1025.00.
51. Dam— **QUAIL ROOST PRINCESS BETTY** 519715  
(No. 46—Group III).  
On A. R. test Class G.
52. Dam— **DAISY DUDLEY OF HIGH VIEW** 359991 A. R.  
12328.5-M. 528.7-F. Cl. B.

**GROUP VII**

6. **QUAIL ROOST LUCKY STRIKE** 227993  
Born December 9, 1934.  
Sire — Maxim of Burkeville 129366 A. R.  
Dam— Maxim's Francine 349830 A. R. (No. 4—Group I).
- Daughters—
53. Dam— **QUAIL ROOST DAME** 416657 A. R.  
9074.1-M. 473.4-F. Cl. G.
54. Dam— **QUAIL ROOST VALOR'S CLARA** 408689 A. R.  
7329.3-M. 446.3-F. Cl. G.
55. Dam— **QUAIL ROOST MAXIM'S NATOLA** 501579 A. R.  
9800.0-M. 503.2-F. Cl. G.
56. Dam— **KEMAH NOTDARCORA** 472419 A. R.  
7987.0-M. 457.6-F. Cl. G.

**GROUP VIII**

7. **FAYROYAL'S MAXIM** 252051  
Born May 8, 1937.  
Sire — May Royal's Majesty 117245 A. R.  
Dam— Maxim's Faithful 330111 A. R.,  
12327.0-M. 644.4-F. Cl. AA.
8. **MAY ROSE MAXIM**—Born March 27, 1938  
Sire — Maxim of Burkeville 129366 A. R.  
Dam— Quail Roost Maxim's May Rose 363365 A. R.,  
15227.4-M. 867.8-F. Cl. BB.  
(Own brother to Quail Roost Rose Maxim 247877 owned by  
Fairlawn Farms, Inc., Adelphia, N. J.)

**GROUP IX**

9. **QUAIL ROOST MAXIM'S MAJESTY** 201459  
3 A. R. Daughters.  
Dam— Quail Roost Ann Spotswood 291458 A. R.,  
13742.5-M. 686.6-F. Cl. F.  
(In service at Croas Daile Farm, John Sprunt Hill, Durham, N. C.)  
Two daughters in herd
57. **QUAIL ROOST MAJESTY'S ROSE** 408687 A. R.  
10438.6-M. 567.7-F. Cl. GG.
58. **QUAIL ROOST MAJESTY'S GIRL** 408691 A. R.  
10508.1-M. 564.6-F. Cl. G.

**GROUP X**

10. **PEGGIE'S PRINCE MAXIM** 335751 A. R.  
(Bred by H. E. Boswell, Burkeville, Va.)  
Two Daughters in Herd
59. **GLADYS' LITTLE GIRL** 335751 A. R.  
14667.9-M. 670.9-F. Cl. AA.
60. **PEGGIE'S MAY CHERRY** 335752 A. R.  
10747.0-M. 536.2-F. Cl. C—On retest Cl. A.